



Tips & Tricks

Orlando Guzman

Innovyze[®]
Empowering water experts

New and returning users may [SIGN IN](#)

All ideas

My feedback

2D Flooding

2 ideas

Calibration

1 ideas

Data Exchange

5 ideas

Hydraulics

14 ideas

Hydrology

3 ideas

Other

Storm Sewer & Flood Modeling

← [User Feedback Forum for Innovyze Products and Services](#)

Welcome to the Innovyze Stormwater, Sewer, and Flood modeling feedback page.

This forum is the place to hear your ideas, feature suggestions, and feedback about our Stormwater, Sewer and Flood Modeling offerings. For more information about these offerings, please visit: <http://go.innovyze.com/Storm-Sewer-Flood>

Please note that your ideas and comments posted here are visible to all other users.

How can we improve Stormwater, Sewer & Flood modeling offerings?

As a user, I want to do XYZ this because it makes me more productive.



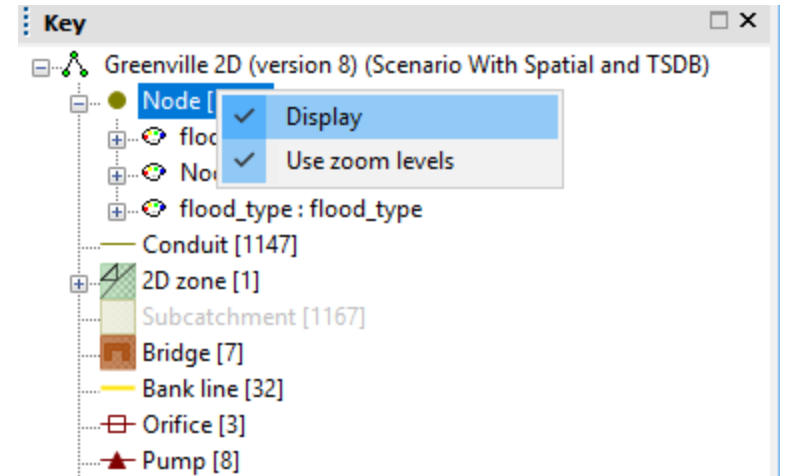
2D Flooding



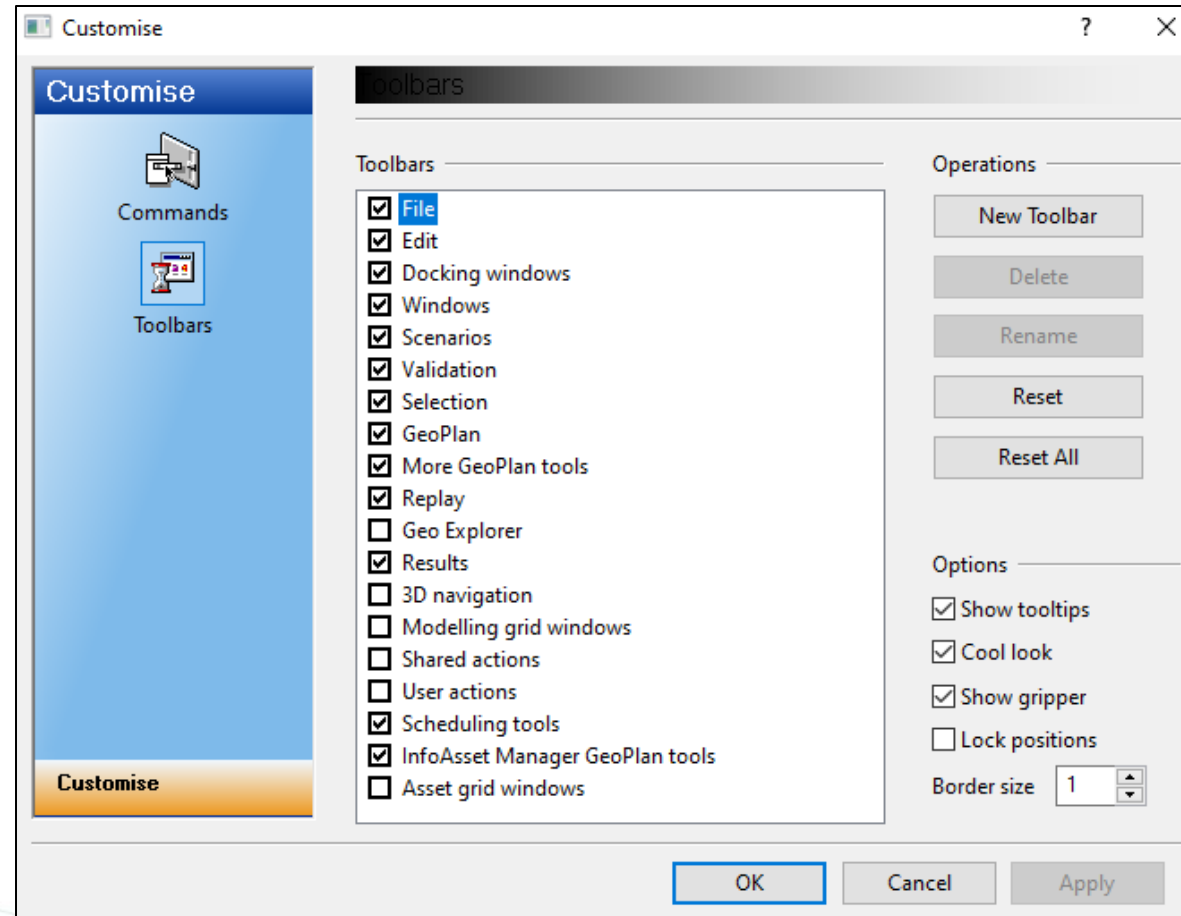
Describe your idea... (optional)

Theme control

- Toggle display for object types
- Toggle zoom level application
- Enable/disable sub themes
- All from thematic keys

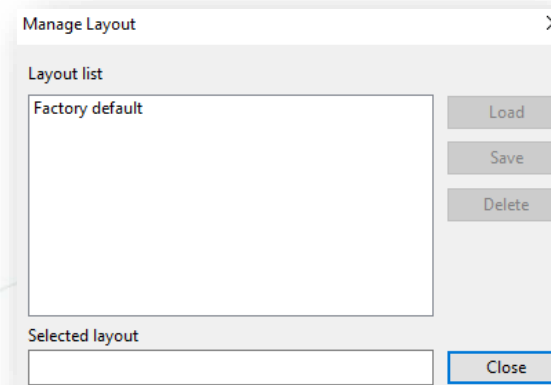
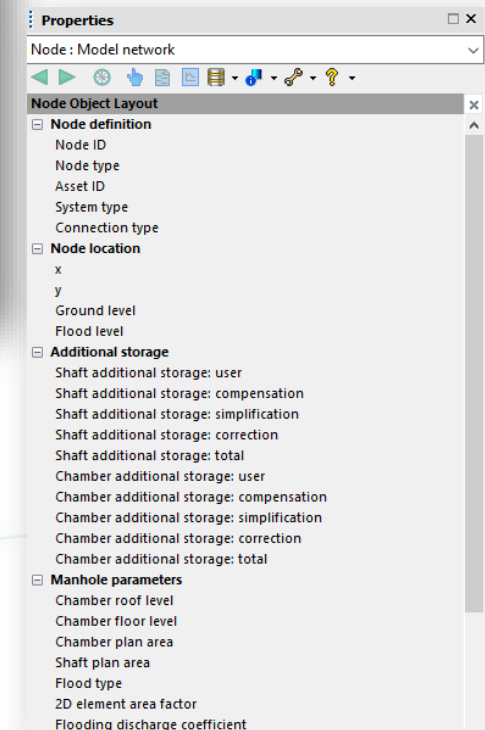
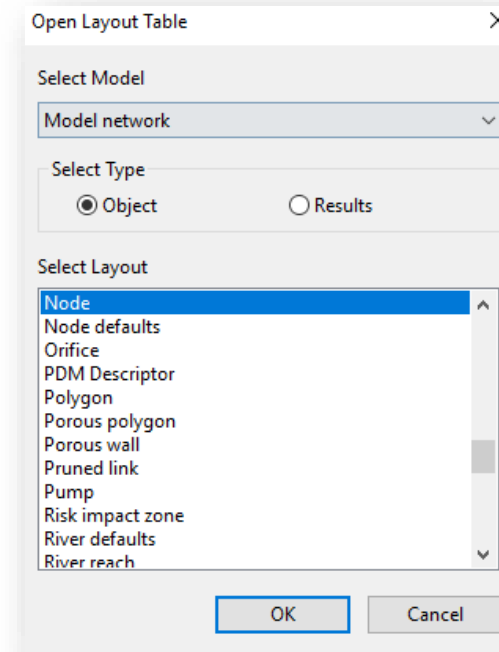


Customise Toolbars



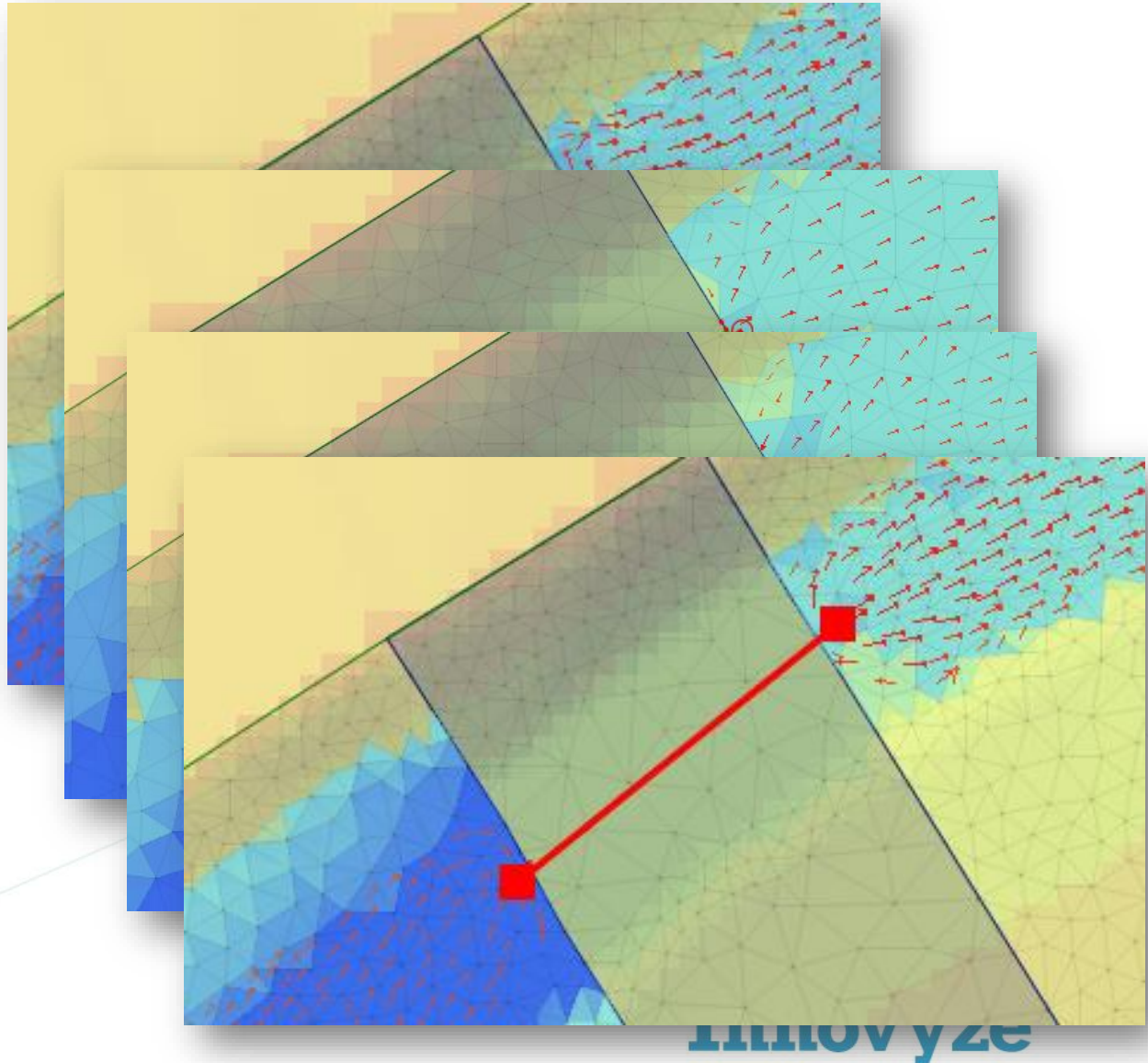
Database layouts

- Save and load layouts
- Select model types for layouts
- Options for both objects and results
- Save on a per user basis



1D-2D Culverts

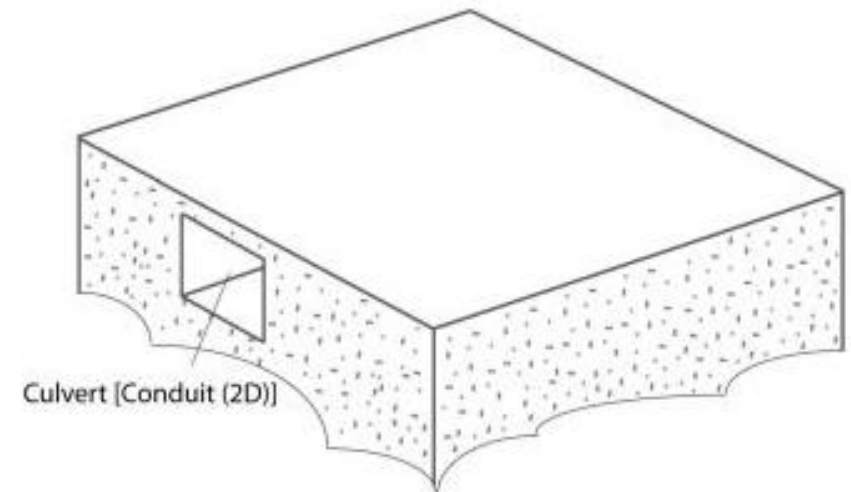
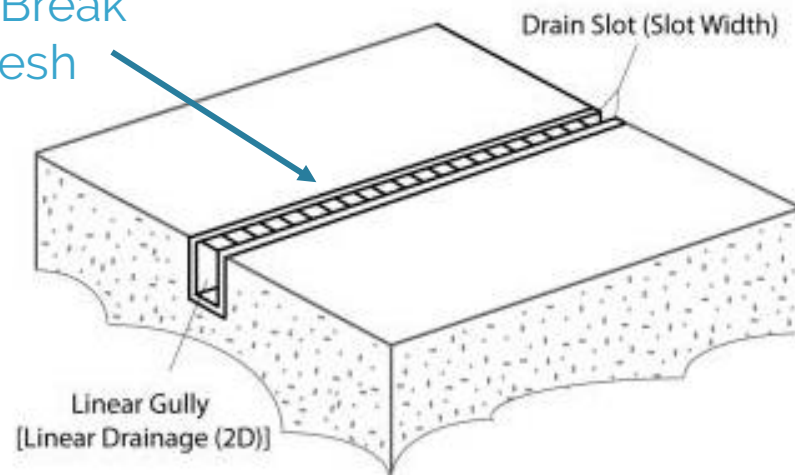
- Simple Conduit with 2D Outfall on Either End
- Set up Inline Banks at each end
- Cut open a 2D Open Path with a Sluice gate opening
- ***Use 2D Conduit with Connect 2D nodes at each end***



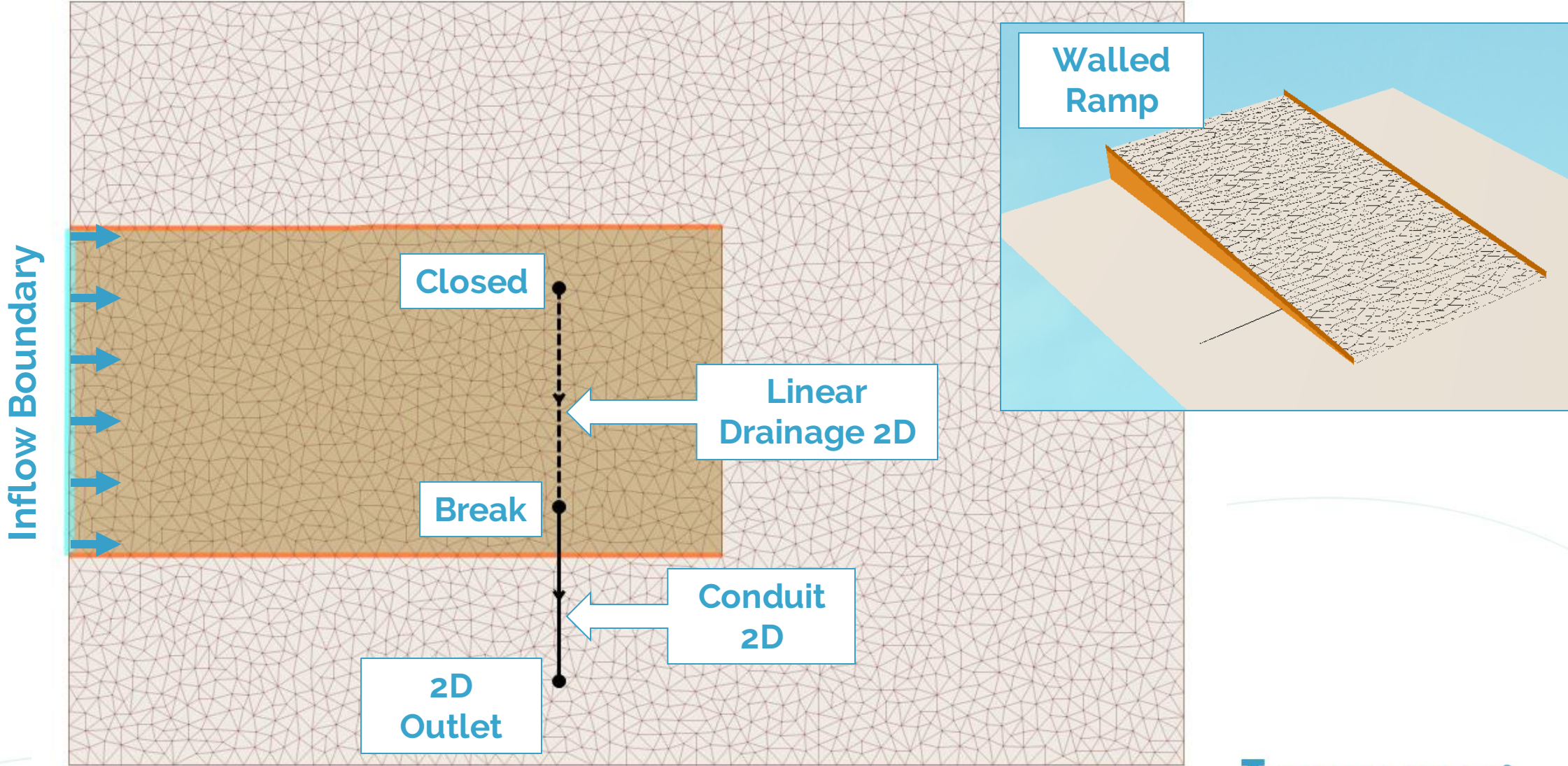
Conduits 2D:

- Can be easily converted from 1D to 2D
- Include linear drainage (trench grates)
- Preserve Momentum & eliminate flow limiting
- Connect to 2D Links, 2D Mesh, or 1D Links

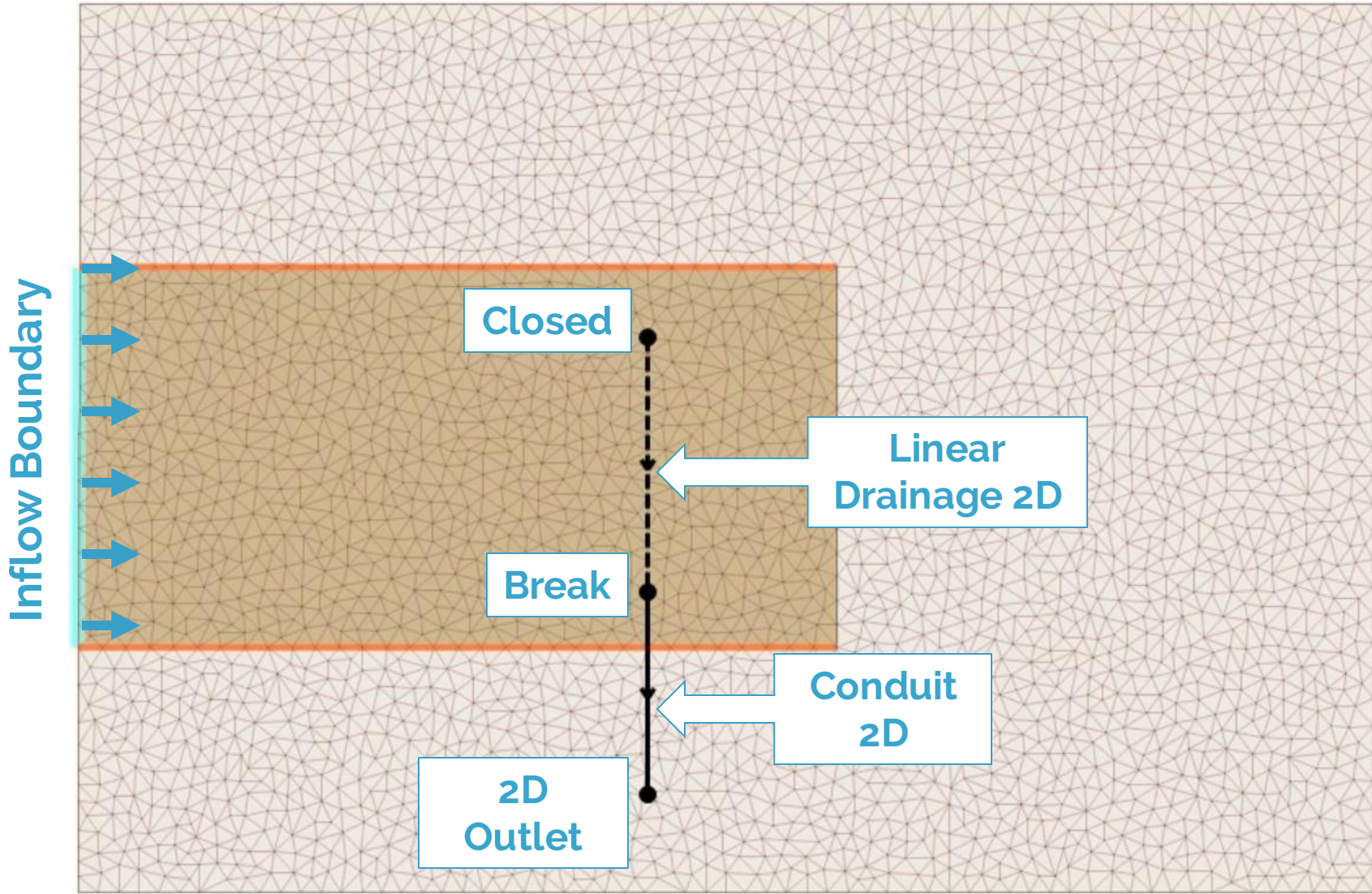
Enforce Break
line in Mesh



Linear Drainage 2D Example



Linear Drainage 2D Example



Conduits 2D Summary:

- Easy seamless connection between 2D and underground links
- Preserve momentum, avoid instability, and eliminate flow limiting condition
- Now available using GPU

Innovyze[®]

Empowering water experts